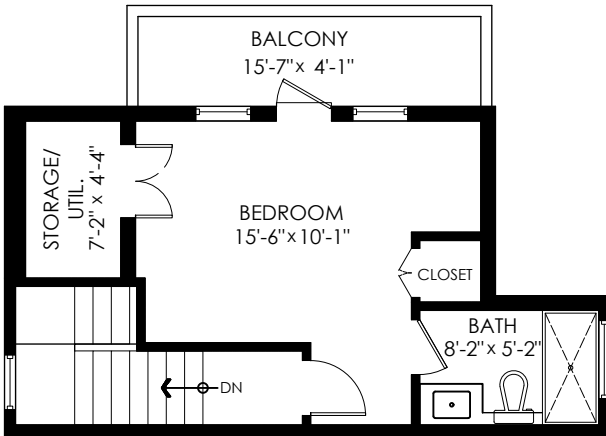


# 1929 Kitchener St Vancouver

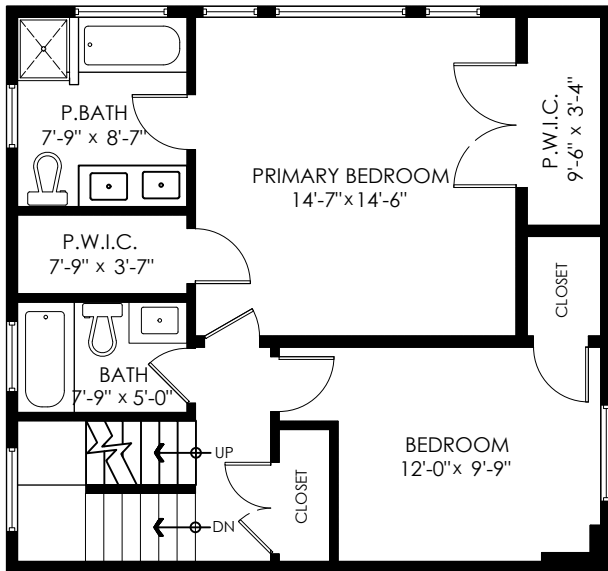
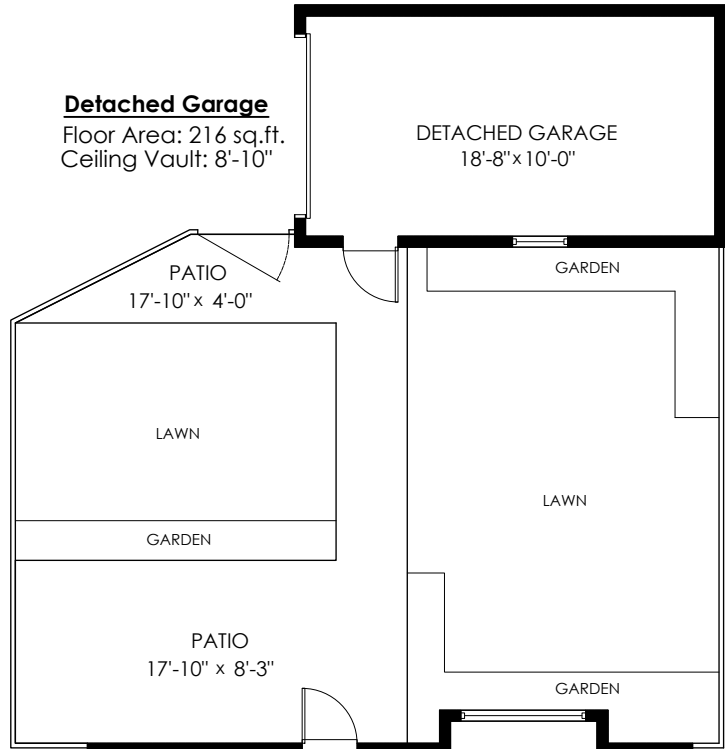
## Top Floor Plan

Floor Area: 368 sq.ft.  
Ceiling Vault: 11'-2"



## Detached Garage

Floor Area: 216 sq.ft.  
Ceiling Vault: 8'-10"



## Upper Floor Plan

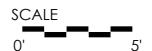
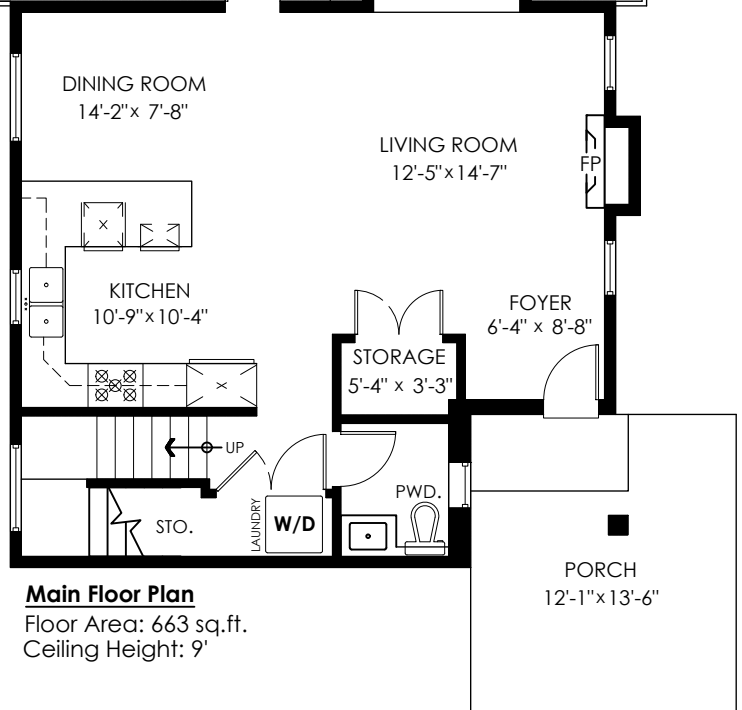
Floor Area: 709 sq.ft.  
Ceiling Height: 9'

Main Floor: 663 sq.ft.  
Upper Floor: 709 sq.ft.  
Top Floor: 368 sq.ft.  
**Total Livable: 1,740 sq.ft.**

Detached Garage: 216 sq.ft.  
Patio: 236 sq.ft.  
Balcony: 64 sq.ft.  
Porch: 163 sq.ft.  
**Total Extras: 679 sq.ft.**

## Main Floor Plan

Floor Area: 663 sq.ft.  
Ceiling Height: 9'



E&O Insured. Total square foot calculated to gross unit area. SQFT based on interior measurements to exterior walls, not taken from original blueprints, may include unfinished area. This is for marketing purposes only and is not intended for architectural/construction use. All details, sizes & placements should be considered approximate within +/- 2% tolerance.

info@pixlworks.com www.pixlworks.com 604.329.5788



MEASURED ON: (2024-05-23)