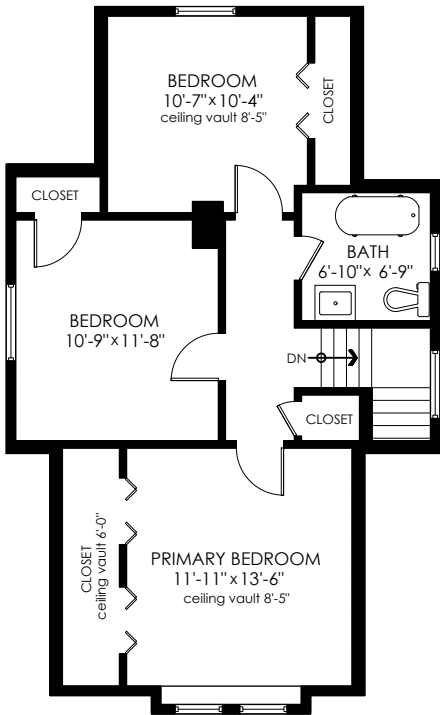
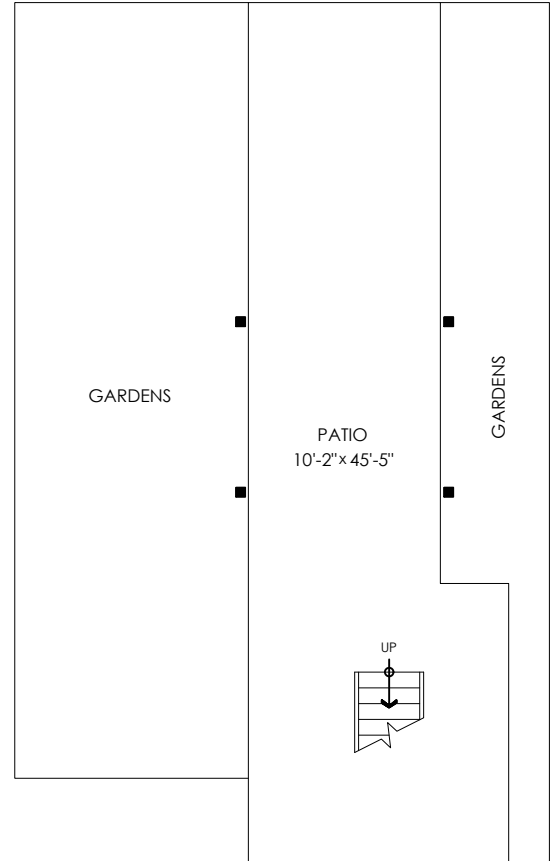


2129 Graveley St, Vancouver

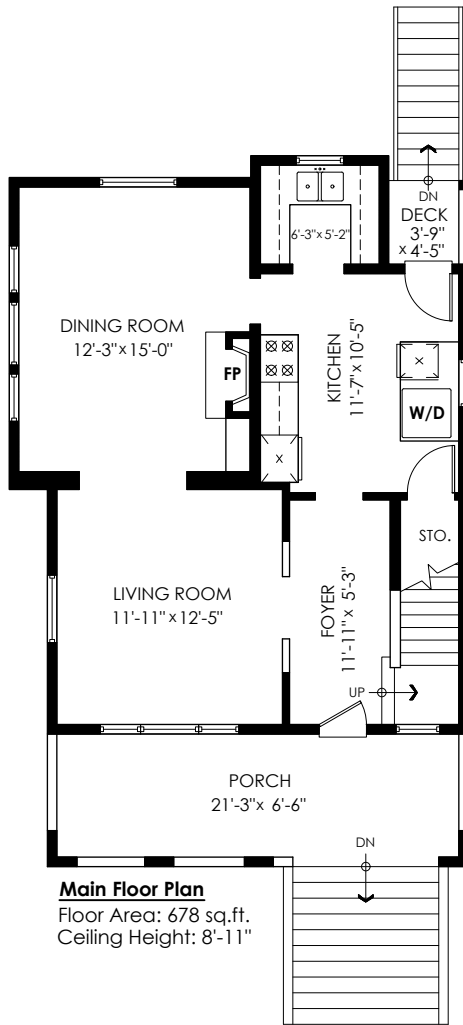
Main Floor: 678 sq.ft.
 Upper Floor: 678 sq.ft.
 Lower Floor: 809 sq.ft.
Total Livable: 2,165 sq.ft.

Patio: 514 sq.ft.
 Deck: 16 sq.ft.
 Porch: 138 sq.ft.
Total Extras: 668 sq.ft.



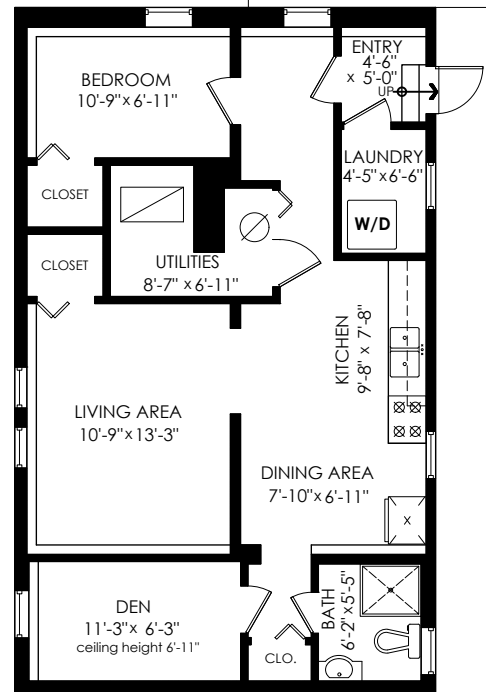
Upper Floor Plan

Floor Area: 678 sq.ft.
 Ceiling Height: 8'-5"



Main Floor Plan

Floor Area: 678 sq.ft.
 Ceiling Height: 8'-11"



Lower Floor Plan

Floor Area: 809 sq.ft.
 Ceiling Height: 7'-4"



E&O Insured. Total square foot calculated to gross unit area. SQFT based on interior measurements to exterior walls, not taken from original blueprints, may include unfinished area. This is for marketing purposes only and is not intended for architectural/construction use. All details, sizes & placements should be considered approximate within +/- 2% tolerance.

info@pixlworks.com www.pixlworks.com 604.329.5788

